



# Accountability Report

Results-Based Evaluation System

Issued 2009–10



## Central Gwinnett High School

Nancy Martin, *Principal*

Dr. John Green, *Area Superintendent*

Gwinnett County Public Schools (GCPS) has developed an accountability system for improving schools called the Results-Based Evaluation System (RBES). RBES fairly and systematically measures a school's progress, providing a process that clearly communicates expectations; reviews, monitors, and supports school performance; and evaluates that performance.

Central Gwinnett's school council and school leaders collaborated on the highlights included in this accountability report, which also serves as the school's annual report. The report provides consolidated information on the school's effectiveness, based on multiple measures and student characteristics. **Please review this report to learn more about the school's improvement efforts and progress.**

### Key Results from 2008–09 Local School Plans for Improvement

Local School Plans for Improvement are plans developed locally by school administrators, teachers, and parent advisory groups. These plans outline school goals.

**Goal 1:** To improve students understanding and performance in all academic areas.

**Goal 2:** To provide an environment in which students can focus on mastering the Academic Knowledge and Skills (AKS) curriculum.

**Results:** Central Gwinnett High School students continued to meet and exceed the state standard in math and language arts achievement, and the school met the standard for the graduation rate as well. As a result, Central Gwinnett achieved Adequate Yearly Progress (AYP) for the sixth consecutive year. The percentage of students passing the science and social studies sections of the Georgia High School Graduation Tests (GHS GT) increased significantly. Student passing rates in science increased from 87% in 2008 to 92% in 2009. In social studies, Central Gwinnett increased from an 83% passing rate in 2008 to a 90% passing rate in 2009. Also important is the increase in the percentage of students who exceeded the state standard to earn a Pass Plus designation in science and social studies. Language arts and math achievement on the GHS GT also increased, with 93% of students passing the language arts assessment and 95% of students demonstrating proficiency in math. Writing scores on the Georgia High School Graduation Writing Test continued to remain strong, with 96% of students passing this important assessment. Another important indicator of student success is our graduation rate. Central Gwinnett's graduation rate, which reflects on-time graduation in four years, continued to improve, increasing from 71.1% in 2008 to 75.9% for the Class of 2009.

### CONTENTS:

- Key Results on Improvement Plans
- 2008–09 Results:
  - Senior Report
  - SAT
  - Gateway Assessment
  - Georgia High School Graduation Tests and Adequate Yearly Progress
  - Advanced Placement Exams
- 2008–09 Highlights
- Staff Data
- Student Data
- School Safety Perceptions

**Tell us what you think about this report.**

**Click here to complete a questionnaire online.**

## 2008–09 Senior Report

	Students Completing HS†	Number of Seniors Planning to Attend College or Postsecondary School*	Number of Honor Graduates	Number of Seniors Taking Advanced Placement (AP) Courses	Number of AP Courses Taken by Seniors	Seniors with Dual Enrollment
<b>Central Gwinnett High</b>	449	395	55	187	490	6
<b>GCPS</b>	8,824	7,902	1,697	3,674	9,944	134

†Reflects system-reported data as of August 2009

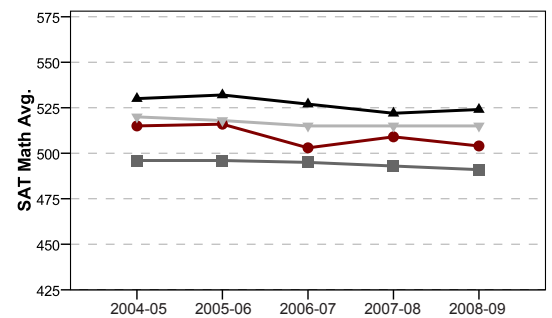
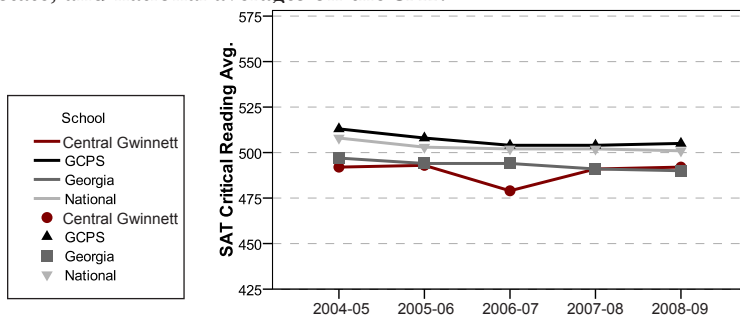
\*Student information self-reported as of April 2009

### 2008–09 Results: SAT

A popular college-admissions test, the SAT features complex reading passages and math concepts, and a writing section. The table to the right shows average scores and percentages of students taking the SAT at our school, compared to the district, state, and nation. The graphs below compare Central Gwinnett students' scores to the Gwinnett, state, and national averages on the SAT.

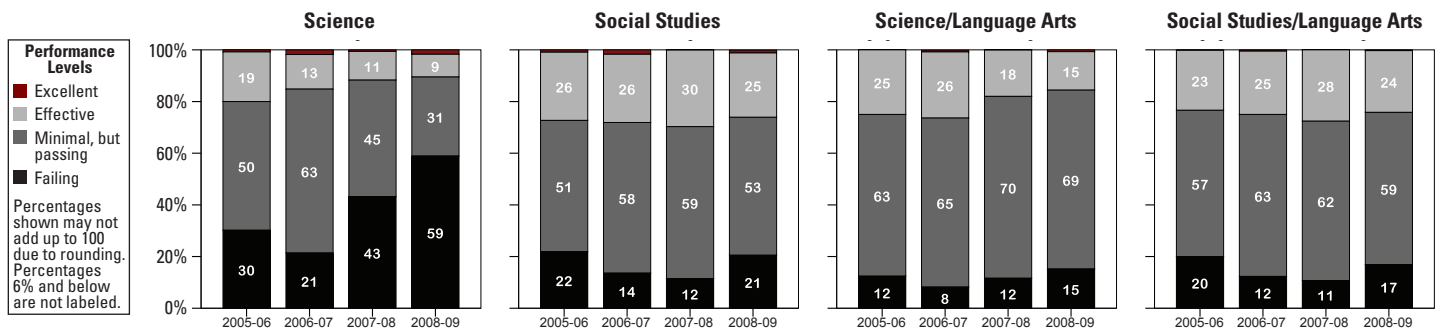
### 2008–09 SAT Averages

	Critical Reading	Math	Writing	Total	% Tested
Central Gwinnett	492	504	479	1475	61%
GCPS	505	524	497	1526	73%
Georgia	490	491	479	1460	71%
National	501	515	493	1509	46%



### 2008–09 Results: High School Gateway

To earn a regular diploma, Gwinnett high school students must pass both GCPS's High School Gateway and the Georgia High School Graduation Tests. Given in the 10th grade, the Gateway essay test covers content in social studies and science, as well as language arts skills—writing, grammar, and spelling. To ensure that more students meet the standard on the high school Gateway, GCPS is offering additional resources, tutorials, and practice opportunities through the school system web site. While many students are successful on the test on their first try, those who are not have seven additional opportunities to take and pass the test before graduation.



### 2008–09 Results: Advanced Placement (AP) Exams

Advanced Placement (AP) courses are challenging, college-level classes taught by specially trained high school teachers. Students have the option of taking an AP exam at the end of the school year. Many colleges award credit for passing the exams or allow a student to be exempt from certain college courses. Students exposed to the demanding AP curriculum are well prepared for the rigors of college coursework. The table below shows the percentage of classes taken at Central Gwinnett High that were designated as AP classes, compared to the county average. The chart also shows the percentage of optional, course-specific AP exams taken, as well as the percentage of AP exams scored 3 or better (on a 5-point scale). In 2008–09, 20.7% of Central Gwinnett students took one or more AP courses, compared to 24.0% of all GCPS high school students.

	2005–06		2006–07		2007–08		2008–09	
	Central Gwinnett	GCPS	Central Gwinnett	GCPS	Central Gwinnett	GCPS	Central Gwinnett	GCPS
AP as Percentage of Total Classes Taken	5.4	4.9	5.7	5.4	6.1	6.2	5.9	7.3
% AP Exams Taken	69.2	72.8	69.3	72.8	74.6	74.6	77.6	77.3
% AP Exams Scored 3+	52.1	66.4	50.1	64.4	49.3	63.1	49.3	61.8

## 2008–09 Results: Georgia High School Graduation Tests (GHSGT) and Adequate Yearly Progress

Schools earn Adequate Yearly Progress (AYP) status by meeting a series of performance goals that every school, system, and the state as a whole must achieve under the federal No Child Left Behind Act. In Georgia, AYP for high schools is determined using results from the Georgia High School Graduation Tests (GHSGT) in English language arts and mathematics. These tests measure the knowledge and skills of students by assessing how well students have learned the state’s curriculum content standards. To make AYP, high schools must meet state-set student achievement goals and graduation standards for all students, and for all subgroups that have 40 or more students or 10% of the students in grade 11, whichever is greater (with a 75-student cap). In addition, schools must test 95% of all students and of all subgroups with 40 or more students. Georgia reports achievement scores for every subgroup with 10 or more students. However, the state only considers results for subgroups that meet the state-set minimum number of students in determining a school’s AYP status.

Central Gwinnett High achieved AYP	All Students	Asian/ Pacific Islander	Black	Hispanic	American Indian/ Alaskan	White	Multi- Racial	Students with Disabilities	Limited English Proficient	Economically Disadvantaged
Math Participation	Achieved	·	Achieved	Achieved	·	Achieved	·	Achieved	·	Achieved
Math Performance	Achieved	·	Achieved	Achieved	·	Achieved	·	·	·	Achieved
Eng. Lang. Arts Participation	Achieved	Achieved	Achieved	Achieved	·	Achieved	·	Achieved	·	Achieved
Eng. Lang. Arts Performance	Achieved	·	Achieved	Achieved	·	Achieved	·	·	·	Achieved

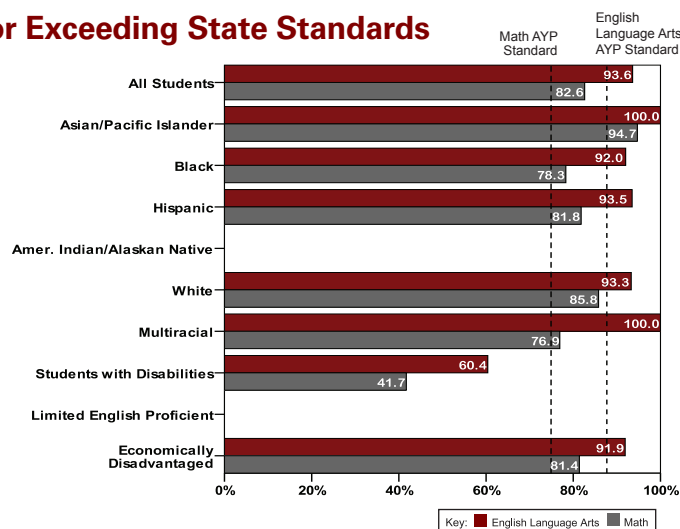
This school **achieved** the state's graduation standard for all students.

• In the table above, only results for subgroups that meet the state-set minimum number of students are used to determine AYP

### Percentage of Students Meeting or Exceeding State Standards

The GHSGT is a curriculum-based test used to measure high school students’ learning. Central Gwinnett High made Adequate Yearly Progress (AYP), meeting all of the state’s academic goals, testing participation requirements, and graduation standards.

In the chart to the right, only subgroups with 10 or more students are reported. Results for groups smaller than the state minimum are not considered for AYP. The dotted lines on this graph represent the state’s AYP standard in Math and English Language Arts in 2009. The standards will increase to 100% by 2014. The chart to the right reflects spring and summer test administrations.



### A Message from the Principal About Student Achievement and Academic Initiatives

Student success is the result of our high expectations for student achievement, quality teaching practices, a rigorous curriculum, and effective intervention and extension classes. All of these factors combine to support student achievement and create a rigorous learning environment for our students.

Rigor is not necessarily about more work, but rather about the quality of the work that students are expected to produce. College-level Advanced Placement (AP) classes— such as calculus, statistics, macroeconomics, government, biology, and physics— top the list of challenging classes at Central Gwinnett High School. In 1999, Central Gwinnett students completed 45 AP examinations. In 2009, CGHS students completed more than 800 AP examinations. While AP courses are rigorous and much is expected of AP students, *all* classes at Central Gwinnett offer a challenging curriculum, preparing students for either a rigorous End of Course Test (EOCT) or a comprehensive final examination.

Benchmark testing throughout the semester ensures that students are learning the curriculum. Results pinpoint areas of academic strength and weakness, by student and by class, providing teachers and students an opportunity to adjust the teaching and learning process during the semester. Teachers also are able to identify students who may need extra assistance on assessments or courses. Intervention classes are offered during the school day and after school to help students who need more time to master the curriculum. Our Credit Recovery program, tutoring programs, and assessment intervention classes help students stay on track for graduation.

CGHS was recognized by *Newsweek* and *U.S. News and World Report* magazines as one of America’s best high schools. Central Gwinnett also was recognized as the regional winner of the Governor’s Cup for making the greatest gains on the SAT during the past three years. These successes can be attributed to our dedicated teachers who challenge our students to achieve at the highest levels.

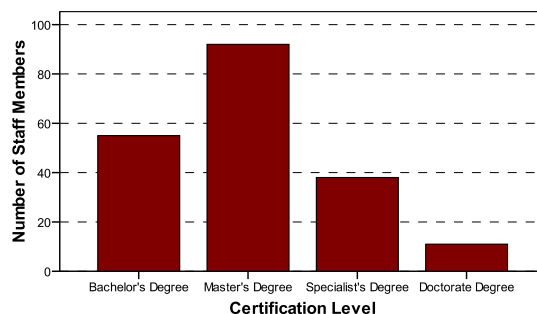
# Central Gwinnett High School

## Other 2008–09 Highlights...

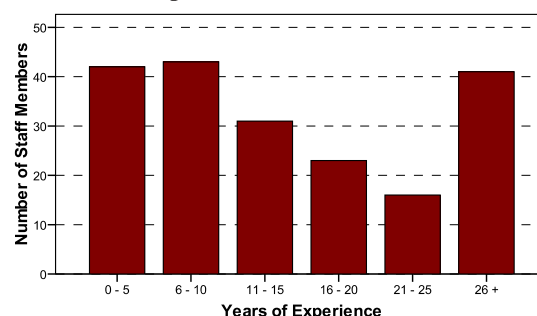
- For the fourth year, Central Gwinnett High School (CGHS) was named one of the 1,000 Best High Schools in America by *Newsweek* magazine.
- *U.S. News and World Report* named CGHS on the magazine's list of "America's Best Schools."
- CGHS was recognized as an Advanced Placement Honor School by the Georgia Department of Education.
- Central Gwinnett was recognized as the regional winner of the Governor's Cup for making the greatest gains on the SAT during the past three years.
- The CGHS Literary Team won the regional championship and finished 4th in the state.
- The Scholar's Bowl Team won the regional championship, finished 4th in the state, and qualified for two national tournaments.
- Central was recognized for contributing more than \$10,000 to Relay For Life in support of the American Cancer Society.
- Central students were offered more than \$4.4 million in scholarships, not including Hope scholarships.
- Our Care Team raised \$7,500 to help needy families in the school community.
- The Black Knight band scored "superior" ratings at the GMEA Festival.
- Two Central Gwinnett students made All-State Chorus.
- The Black Knight and Lady Knight Basketball teams made the state playoffs.
- The 9th Grade and Junior Varsity Boys Basketball teams were Region Champs.
- Both the Girls' and Boys' Soccer teams made the state playoffs.
- A number of our teachers were acknowledged for their outstanding work:
  - Teacher of the Year – Peggy Todd
  - STAR Teacher – Bruce Young
  - Toyota Inspiring Teacher – Hope Campbell

## 2008–09 Staff Data

### Staff Certification Level



### Experience in Education



## 2005–2009 Student Data

	School Year			
	05-06	06-07	07-08	08-09
<b>Enrollment</b>	<b>2,606</b>	<b>2,758</b>	<b>2,761</b>	<b>2,832</b>
Asian/Pacific Islander	7%	7%	7%	7%
Black	37%	39%	42%	44%
Hispanic	17%	20%	20%	21%
American Indian/Alaskan Native	0%	0%	0%	0%
White	37%	32%	27%	24%
Multiracial	2%	2%	3%	3%
Special Education	14%	13%	14%	14%
ESOL	7%	7%	5%	5%
Free/Reduced Lunch	46%	49%	54%	58%
<b>Average Attendance</b>	<b>94%</b>	<b>95%</b>	<b>95%</b>	<b>95%</b>

## School Safety Perceptions

Based on responses to 2008–09 RBES Perception Survey...

- 94.3% of students agreed or strongly agreed that they felt safe at Central Gwinnett High.
- 68.2% of parents agreed or strongly agreed that their child's school was safe.

*The mission of Gwinnett County Public Schools is to pursue excellence in academic knowledge, skills, and behavior for each student, resulting in measured improvement against local, national, and world-class standards.*

**Central Gwinnett High School**  
564 W. Crogan Street • Lawrenceville GA 30046  
(770) 963-8041 • [www.centralgwinnett.net](http://www.centralgwinnett.net)  
Nancy Martin, Principal

**Gwinnett County Public Schools**  
437 Old Peachtree Rd., NW • Suwanee, GA 30024-2978  
[www.gwinnett.k12.ga.us](http://www.gwinnett.k12.ga.us)

**2009 Gwinnett County Board of Education**  
Daniel D. Seckinger, 2009 Chairman;  
Dr. Mary Kay Murphy, 2009 Vice Chairman;  
Carole C. Boyce; Dr. Robert McClure; and Louise Radloff  
J. Alvin Wilbanks, CEO/Superintendent